

E-SERVICE-LEARNING GUIDELINE FOR COMMUNITY PARTNERS

ALŽBETA BROZMANOVÁ GREGOROVÁ

From October 2022 until October 2023, all partners implemented the survey between community partners. We approached 10 community partner in total, and based on their recommendations, we prepared the first version of the manual. Partners commented on the first draft, and based on the feedback, we provided a second version of the guide.

This manual is dedicated to the community partners involved or planning to be involved in the e-Service-learning (e-SL) projects. It should improve your understanding of e-SL and prepare you for participation in the mutual beneficiary partnership in e-SL projects with university students and teachers. It should help you to:

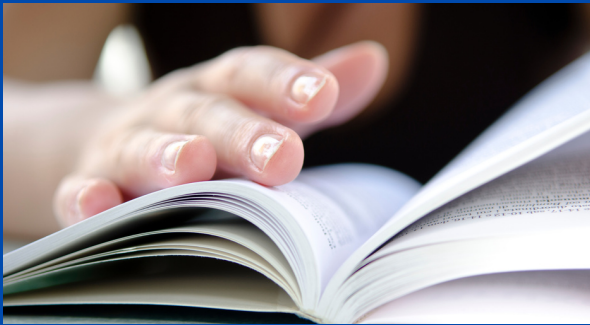
- understand e-SL as a teaching and learning methodology;
- understand the specifics of e-SL;
- distinguish e-SL from other community-oriented activities;

- be aware of the benefit of e-SL for your organization;
- understand your roles and responsibilities in the process of planning, implementation, and evaluation of e-SL;
- facilitate students' learning in e-SL projects.

We developed this guide following a comprehensive and collaborative process. This involved gathering expert insights, engaging in in-depth discussions with stakeholders, and utilising feedback from preliminary users. This rigorous approach ensures the content is relevant and beneficial for its intended audience. We hope you find the insights and recommendations provided here valuable as you navigate the intricacies of e-SL.

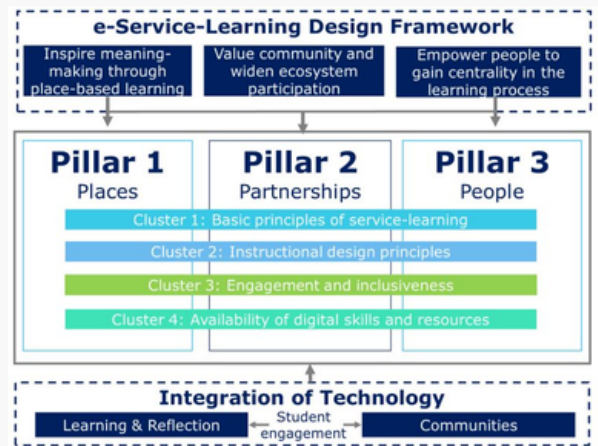
From November 2023 we are using the manual to pilot e-service-learning projects with community partners. After the piloting (in June 2024), we will collect feedback from community partners and prepare, based on the input, the final version of the manual.





EVALUATION METHODOLOGY AND MATERIALS FOR THE ASSESSMENT AND COMMUNICATION OF THE E-SL COMMUNITY IMPACT

From January 2023 until October 2023 we implemented desk research to explore existing tools and methodologies used to measure the impact on the community. Based on the literature review, we prepared the first version of the evaluation methodology. Partners provided feedback on the first draft, and based on the feedback, the second draft was created. The guide should also help the universities to establish partnerships based on the idea of mutually beneficial relationships and the consideration of community needs.



TRANSFORMING HIGHER EDUCATION THROUGH PEOPLE, PLACES, AND PARTNERSHIPS!

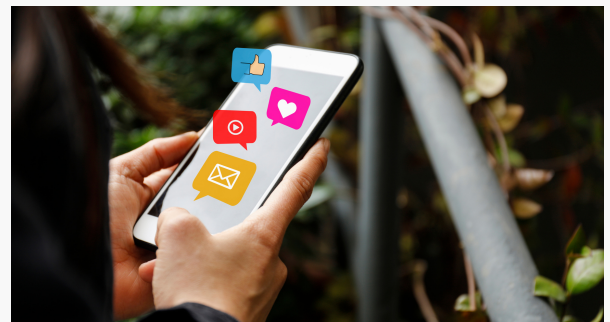
The newest article, “e-Service-Learning for More Digital and Inclusive EU Higher Education Systems: A New e-SL Design Framework,” featured in RIDAS Journal, authored by the dream team – Irene Culcasi, Maria Cinque, Ianos Maria Gratiela, and Loredana Manasia.

Read the full article here: https://lnkd.in/d2cW_hYQ.



E-SL4EU MEETING IN BUCHAREST (19-20.10.2023)

NUSTPB (National University of Science and Technology Politehnica Bucharest) had the pleasure of hosting the third transnational project meeting of the e-SL4EU Project. A heartfelt thank you to all participants for their unwavering commitment and valuable contributions.



FOLLOW US ONLINE

We invite you to visit our project's website and public domain in social media, where we publish the latest information on the activity of all consortium teams. We encourage you to share opinions on the results of our work.



<https://e-sl4eu.us.edu.pl>



<https://www.facebook.com/100086623302990>



<https://www.linkedin.com/in/e-sl4eu-094457253>



e-sl4eu@us.edu.pl